

HARDING LOEVNER  
FUNDS, INC.GLOBAL EQUITY  
PORTFOLIO

TICKER: HLMGX

NAV: \$18.74

Expense Ratio: 1.25%

Minimum Investment: \$100,000

## Returns (for the Periods Ending March 31, 2005)

	Last Quarter	Last 12 Months	Three Years <sup>1</sup>	Five Years <sup>1</sup>	Since Inception <sup>1</sup> (12/1/1996)	Volatility <sup>2</sup>
<b>HLF Global Eq Portfolio<sup>3,5</sup> (net)</b>	<b>0.32%</b>	<b>5.00%</b>	<b>5.05%</b>	<b>(1.53%)</b>	<b>4.93%</b>	<b>16.02%</b>
HLF Global Eq Portfolio <sup>4,5</sup> (gross)	0.63%	6.31%	6.37%	(0.29%)	6.24%	15.96%
MSCI AC World Index <sup>6</sup>	(0.96%)	10.87%	6.97%	(2.53%)	5.48%	15.64%
Lipper Global Fund Index <sup>7</sup>	(0.88%)	9.19%	6.42%	(2.16%)	6.12%	15.37%

<sup>1</sup>Annualized Returns; <sup>2</sup>Variations of monthly returns from the average, since inception, annualized, <sup>3</sup>Performance results reflect the effects of all investment advisory fees, <sup>4</sup>Performance results do not reflect the effects of investment advisory fees.

<sup>5</sup>The Global Equity Portfolio commenced operations on December 1, 1996, following a tax-free merger with the HLM Global Equity Limited Partnership ("GELP").

<sup>6</sup>The MSCI All Country World Index, the primary benchmark, is a free float-adjusted market capitalization index that is designed to measure equity market performance in the global developed and emerging markets. The Index consists of 49 developed and emerging market countries. Net dividends reinvested. You cannot invest directly in this Index.

<sup>7</sup>The Lipper Global Fund Index, an unmanaged index published by Lipper Analytical Services, Inc., includes 30 funds that are generally similar to the Portfolio, although some funds in the index may have somewhat different investment policies or objectives. This fund invests in at least 25% of its total assets in securities outside the US and may own US securities. You cannot invest directly in this Index.

**Performance data quoted represents past performance; past performance does not guarantee future results. The investment return and principal value of an investment will fluctuate so that an investor's shares, when redeemed, may be worth more or less than their original cost. Current performance of the Portfolio may be lower or higher than the performance quoted. Performance data current to the most recent month end may be obtained by calling 1-877-435-8105 or visiting [www.hardingloevner.com](http://www.hardingloevner.com).**

Currently, the investment advisor of the Portfolio is waiving a portion of its fee. Absent such waiver, the expense ratio of the Portfolio would be higher and the Portfolio's performance lower.

**The Portfolio invests in foreign securities, which will involve greater volatility and political, economic, and currency risks and differences in accounting methods. It also invests in emerging markets, which involve unique risks, such as exposure to economies less diverse and mature than the U.S. or other more established foreign markets. Economic and political instability may cause larger price changes in emerging markets securities than other foreign securities.**

## Contributors to Returns (as of March 31, 2005)

Largest Holdings	Sector	Region	Return	Portfolio Wt.	Contribution
EnCana	Energy	Canada	23.59%	3.6%	0.69%
Oracle	Info Technology	United States	(9.04%)	3.6%	(0.35%)
Swiss Re	Financials	Europe ex-EMU	0.76%	2.8%	0.01%
Colgate-Palmolive	Cons Staples	United States	2.47%	2.6%	0.08%
Kinder Morgan	Energy	United States	4.49%	2.6%	0.11%

Positive Contributors	Sector	Region	Return	Portfolio Wt.	Contribution
EnCana	Energy	Canada	23.59%	3.6%	0.69%
Rio Tinto	Materials	Pacific ex-Japan	15.33%	2.4%	0.34%
Samsung Electronics	Info Technology	Emerging Markets	13.03%	1.4%	0.30%
Medco Health	Health Care	United States	19.16%	1.3%	0.21%
Exxon Mobil	Energy	United States	16.83%	1.4%	0.20%

Negative Contributors	Sector	Region	Return	Portfolio Wt.	Contribution
Oracle	Info Technology	United States	(9.04%)	3.6%	(0.35%)
American Intl Group	Financials	United States	(15.46%)	1.9%	(0.34%)
Qualcomm	Info Technology	United States	(13.38%)	1.6%	(0.28%)
JSR Corp	Materials	Japan	(9.45%)	2.4%	(0.24%)
Caterpillar	Industrials	United States	(5.81%)	2.5%	(0.19%)

All holdings and sector allocations are subject to review and adjustment in accordance with the Portfolio's investment strategy and may vary in the future, and should not be considered recommendations to buy or sell any security. The Portfolio is actively managed; therefore holdings may not be current.

## Transfer Agent:

## Investors Bank &amp; Trust

Attn: Pam Davis  
P.O. Box 642, OPS 22  
Boston, MA 02117-0642  
Tel: 877-435-8105  
Fax: 617-937-3051

## Investment Advisor:

**Harding, Loevner  
Management, L.P.**  
50 Division Street,  
Suite 401  
Somerville, NJ 08876  
Tel: 908-218-7900  
Fax: 908-218-1915

Stock selection in Information Technology and Consumer Discretionary were the best contributors to relative performance; while Industrials detracted.

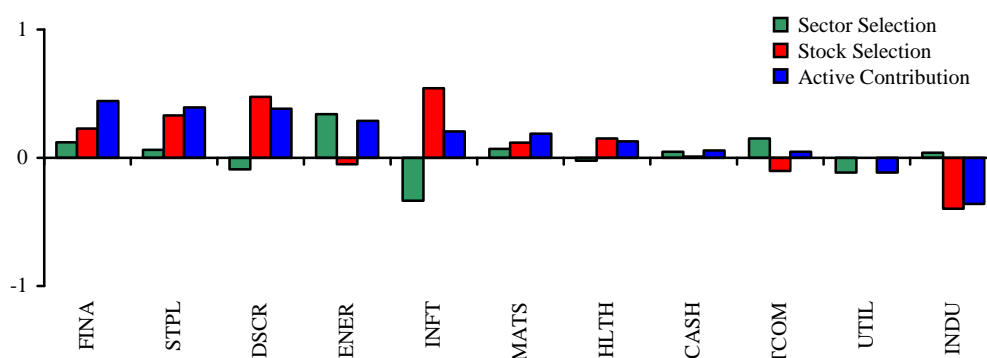
Stock selection in Emerging Markets and Canada were the main contributors to relative performance; Japan and Europe ex-EMU the biggest detractors.

## Sector Performance and Allocation

SECTOR	TOTAL RETURNS (USD)			AVERAGE WEIGHTS		
	Portfolio	Benchmark	Difference	Portfolio	Benchmark	Difference
Cons Discretionary	(0.04%)	(3.58%)	3.54%	13.8%	11.9%	1.9%
Health Care	2.66%	(0.51%)	3.17%	5.3%	9.9%	(4.6%)
Info Technology	(3.22%)	(6.13%)	2.91%	17.4%	11.4%	6.0%
Cons Staples	3.87%	1.34%	2.53%	11.9%	8.6%	3.3%
Materials	3.94%	2.62%	1.32%	8.4%	5.9%	2.5%
Financials	(2.04%)	(3.35%)	1.31%	16.4%	24.1%	(7.7%)
Cash	0.61%	---	0.61%	1.3%	---	1.3%
Energy	11.90%	12.36%	(0.46%)	11.5%	8.7%	2.8%
Utilities	---	2.04%	(2.04%)	---	4.0%	(4.0%)
Industrials	(2.31%)	0.73%	(3.04%)	12.5%	10.4%	2.1%
Telecom Services	(10.85%)	(5.16%)	(5.69%)	1.5%	5.1%	(3.6%)

Source: Wilshire Atlas: MSCI

## Sector Value-Added Relative to the Benchmark



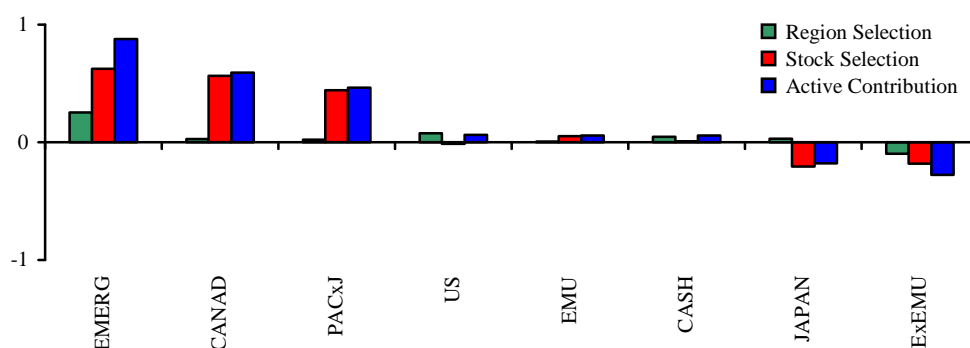
Source: Wilshire Atlas

## Region Performance and Allocation

REGION	TOTAL RETURNS			AVERAGE WEIGHTS		
	Portfolio	Benchmark	Difference	Portfolio	Benchmark	Difference
Canada	23.59%	3.78%	19.81%	3.3%	2.8%	0.5%
Pacific ex-Japan	14.53%	0.71%	13.82%	4.1%	3.3%	0.8%
Emerging Markets	6.17%	1.63%	4.54%	13.9%	5.4%	8.5%
Cash	0.61%	---	0.61%	1.3%	---	1.3%
Europe EMU	0.37%	(0.02%)	0.39%	14.2%	14.5%	(0.3%)
United States	(2.05%)	(2.05%)	0.00%	42.1%	49.7%	(7.6%)
Japan	(3.71%)	(2.34%)	(1.37%)	10.8%	9.1%	1.7%
Europe ex-EMU	(0.45%)	1.03%	(1.48%)	10.3%	15.2%	(4.9%)

Source: Wilshire Atlas. MSCI

## Region Value-Added Relative to the Benchmark



Source: Wilshire Atlas

© 2005 Harding, Loevner

The Portfolio's investment objectives, risks, charges and expenses must be considered carefully before investing. The prospectus contains this and other important information about the investment company, and it may be obtained by calling 1-877-435-8105, or visiting [www.hardingloevner.com](http://www.hardingloevner.com). Please read carefully before investing.

The Portfolios are distributed by Quasar Distributors, LLC (04/05).